

FACIAL MASK WITH FILTER POCKET

FINISHED SIZE: S(BABY- KID), M(KID), L(ADULT 1), XL(ADULT 2)

The worldwide spread of the virus is on the headlines all over the world. Not only that, these unfortunate event caused many necessities in life such as masks. This week, iThinkSew wants to help people better prepare themselves for any potential outbreak. The free Reusable Mask pattern is available for everyone and even has a special pocket to put in filters. To spread the message as far as possible, we even have a [Youtube video](#) to help out all sewers! *Designer's Review*

MATERIAL LIST

FABRIC

44" wide mask fabric
(1/4) Yard for outer fabric
(1/4) Yard for inner fabric
(1/4) Yard for filter pocket

Filter

(1/4) Yard for filter

TOOL LIST

Ruler, Scissors, Chalk pencil, Pencil, Sewing machine,
Pins, Needle, Shape tool, fabric clips

* All seam allowances are 3/8" unless specified otherwise

*All units are in inches.

** After printing the pattern and taping the pieces together, please follow the reference the provided size guide (3" or 5").

** Patterns marked as A4 are for users who utilize the A4 standard paper size. If the pattern fits inside a single page of letter and/or A4 paper then a separate A4 size file is not included, as the pattern will work with both paper sizes.

OTHERS

(2) 11"-13", 4mm wide elastic band
(1) 3 1/2"-4" (10cm),, 1-4mm wide wire
(2) Ear loop adjusters
(1) Insert elastic needle threader

© 2020 Copyright of ithinksew.com

The finished products may only be sold when the following conditions are applied.

*Full credit must be given to ithinksew.com for the patterns (both online and offline). For example, when products are sold online, they must include a statement saying "This pattern was designed by ithinksew.com."

When sold offline, a tag must be attached, stating, "The finished products may only be made by crafters. It may not be mass produced." The conditions above may change.

Cut out the Fabric

Draw the patterns directly onto the wrong side of a single layer of fabric. Cut out the exterior, lining, and interfacing. Fuse the interfacing on the wrong side of the lining, following the manufacturer's guide.

EXTERIOR

- (2) Outer Piece (1 and 1 Reversed)
- (2) Inner Piece (1 and 1 Reversed)
- (2) Filter Pocket Piece (1 and 1 Reversed)
- (2-3) Filters

OTHER

- (2) 11"-13" Length Elastic Band
- (1) 3 1/2" - 4" Length wire

- 1** Place the two outer pieces with right sides together. Pin and stitch the center edge, backstitching at both ends.



- 2** Clip the center seams of the mask.



- 3** Open and press the center seams of the outer piece. Topstitch both center seams as close as end of the seams. Repeat step 1 to step 3 for the inner piece and pocket piece.



- 4** Fold over the side seam of pocket 3/4" to the wrong side and press. Fold it over 3/4" again. Pin and sew along the folded edge, 1/8" away from the seam.



- 5** Facing up the right side of the inner piece and pocket. Place the filter pocket to the inner piece matching center. Pin and baste inner piece and pocket together.



- 6** Place the inner piece and outer piece with the right sides facing each other, matching the center. Pin and stitch all around the mask pieces together, leaving one short side open.



7 Clip the corner seams. Clip the round seams.



8 Turn the mask right side out through the opening then press. Fold the opening seam towards wrong side of the fabric. Then press.



9 Stitch the wire casing, leaving one side open.



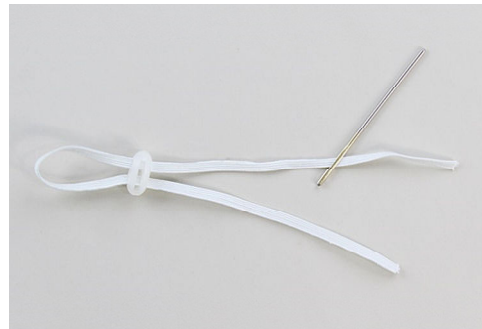
10 Insert the wire into the opening of the wire casing. Close the opening.



11 Fold the both sides of the mask 1/2" toward inner side to make the elastic casing. Stitch the elastic casing 1/8" away from the edge. Repeat the same process to the other side of elastic casing.



12 Thread the elastic through the hole of the ear loop adjuster using a needle threader.



13 Thread the elastic through the elastic casing using a needle threader.



17 Insert the filter through the pocket opening. Or insert another layer of material through the pocket opening for extra protection.



14 Tie the elastic.



15 Push the knot of the elastic into the elastic tube. Adjust the elastic using ear loop adjuster. Attach the elastic for the other side in the same manner.



16 Attach the elastic for the other side in the same manner



** When printing this pattern, please print it without any margins at actual size.

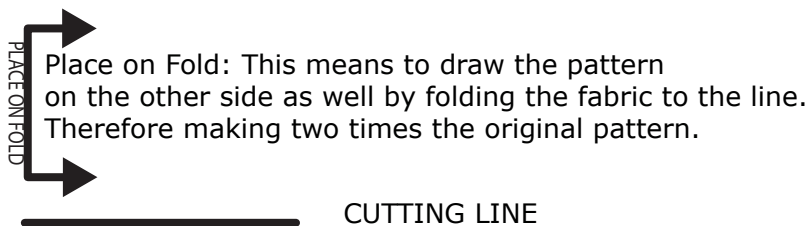
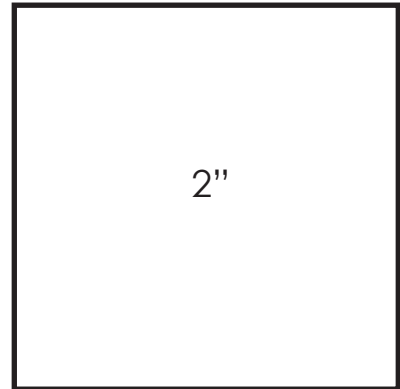
** After printing the pattern and taping the pieces together, please follow the reference the provided size guide (3" or 5").

** If the pattern fits inside a single page of letter and/or A4 paper then taping is not required.

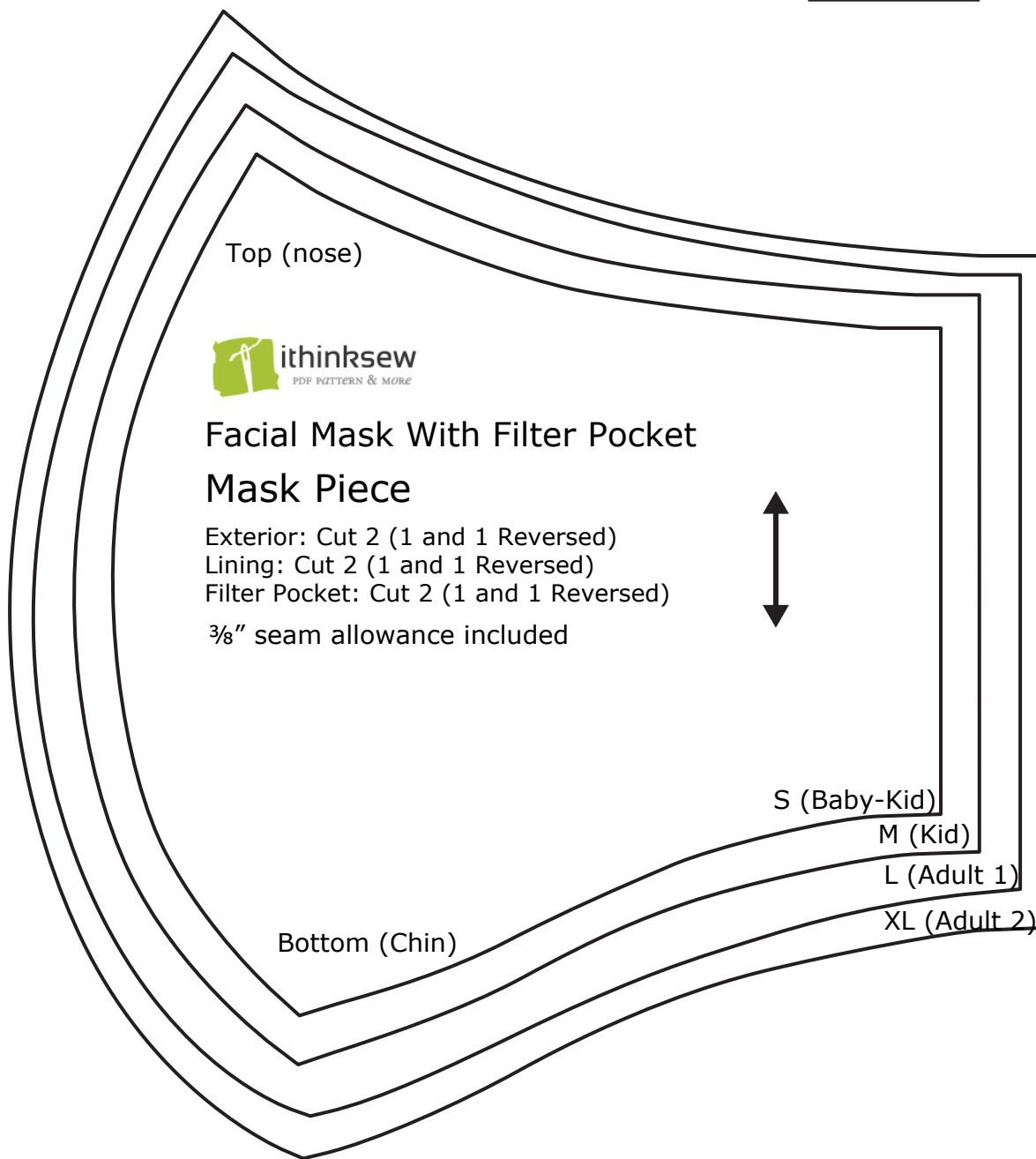
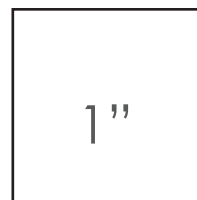
** Patterns marked as A4 are for users who utilize the A4 standard paper size.

** Patterns marked as A4 are for users who utilize the A4 standard paper size. If the pattern fits inside a single page of letter and/or A4 paper then a separate A4 size file is not included, as the pattern will work with both paper sizes

** If you experience that certain parts of the pattern are not printing, you should be able to ignore those near the edge/border. These are usually just guides & signs.



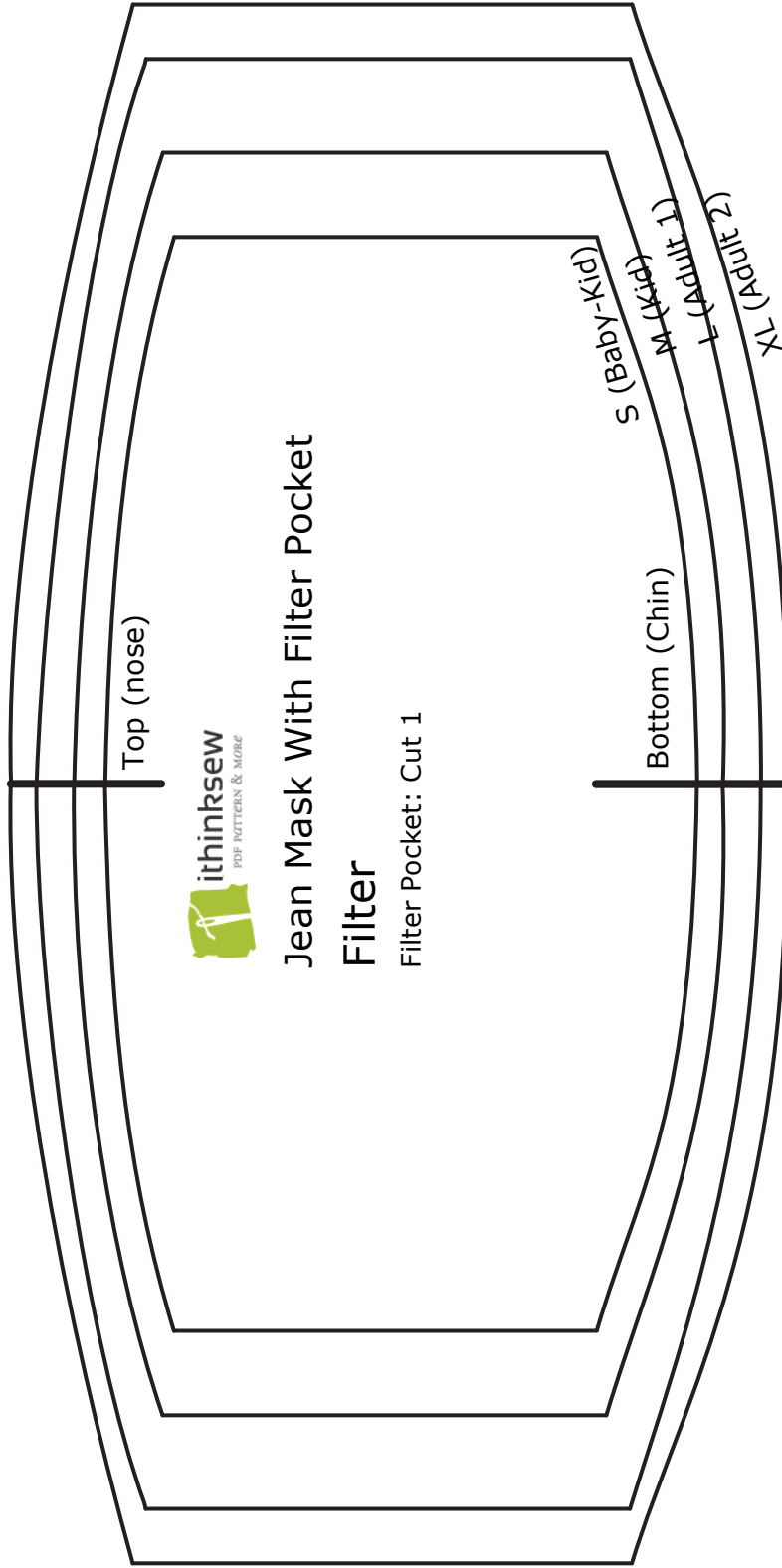
© 2020 Copyright of ithinksew.com
Personal use only.



Size: S(Baby- Kids), M(Kids), L(Adult), XL(Adult)

3"(7.62cm)

3" (7.62cm)



3" (7.62cm)